



Easy Chess Puzzle # 0113

By

G Bud Games
<https://gbud.in>

January 22, 2022

Contents

Easy Chess puzzle # 0113 - Capture opponent's queen after a discovered check	3
Easy chess puzzle 0113	3
Solution to easy chess puzzle 0113	4
Solution 1	4
Right moves for the solution to the easy chess puzzle 0113	6
Explanation for the moves	6
Categories of easy chess puzzle 0113	7
easy chess puzzle 0113 chart	7
How to view the solution to easy chess puzzle 0113	9
How to get help for moves in the easy chess puzzle 0113	10
Play chess for free	11

List of Figures

1	Solve this easy chess puzzle 0113. Capture opponent's queen after a discovered check @ https://gbud.in/gvr4g41	3
2	Solve this chess puzzle online with solution @ https://gbud.in/gvr4g41	3
3	Initial board position of easy chess puzzle 0113	4
4	b4+	5
5	Bf7	5
6	bx a5	6
7	easy chess puzzle 113 chart 1	7
8	easy chess puzzle 113 chart 2	8
9	easy chess puzzle 113 chart 3	8
10	easy chess puzzle 113 chart 4	9
11	Click the solution button to view solutions @ https://gbud.in/gvr4g41	9
12	Click the help button to get help on next move @ https://gbud.in/gvr4g41	10
13	Solve more easy puzzles @ https://gbud.in/chsezpz	10
14	Solve other puzzles @ https://gbud.in/chsgppz	10
15	Play chess online for free. Solve puzzles and play with friends	11
16	Solve this puzzle online by scanning this QR code or go to the link below	12

Easy Chess puzzle # 0113 - Capture opponent's queen after a discovered check

Solve this easy chess puzzle and improve your chess games through improvement of your chess strategies and chess tactics.

Puzzle No : 0113

Difficulty level : Easy

Description : Capture opponent's queen after a discovered check

Next Move : White

Player level : Beginner

Short URL for puzzle : <https://gbud.in/gvr4g41>

Easy chess puzzle 0113

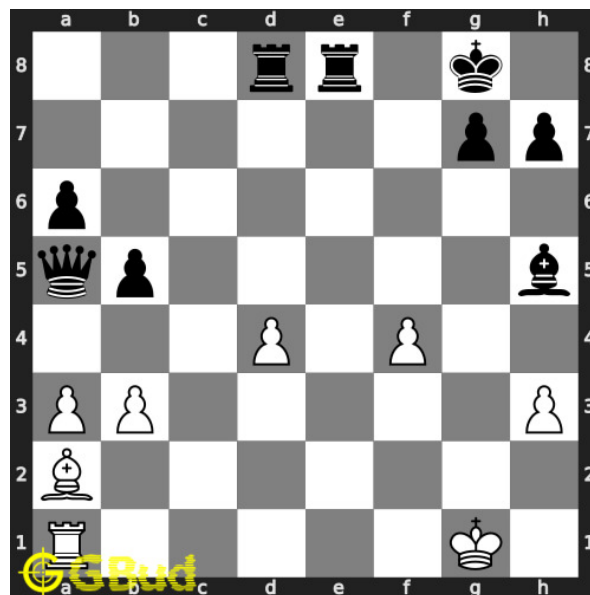


Figure 1: Solve this easy chess puzzle 0113. Capture opponent's queen after a discovered check @ <https://gbud.in/gvr4g41>



Figure 2: Solve this chess puzzle online with solution @ <https://gbud.in/gvr4g41>

Dont forget to check out [chess puzzles](#), [easy chess puzzles](#), [medium chess puzzles](#), [hard chess puzzles](#) and [chess puzzles collections](#) .

Solution to easy chess puzzle 0113

At this puzzle, next [move](#) is by [White](#). The objective of the puzzle is to capture opponent's queen after a discovered check.

See the interactive solution at the [puzzle page](#)

Solution 1

Initial board position This is the initial board position of easy chess puzzle 0113.

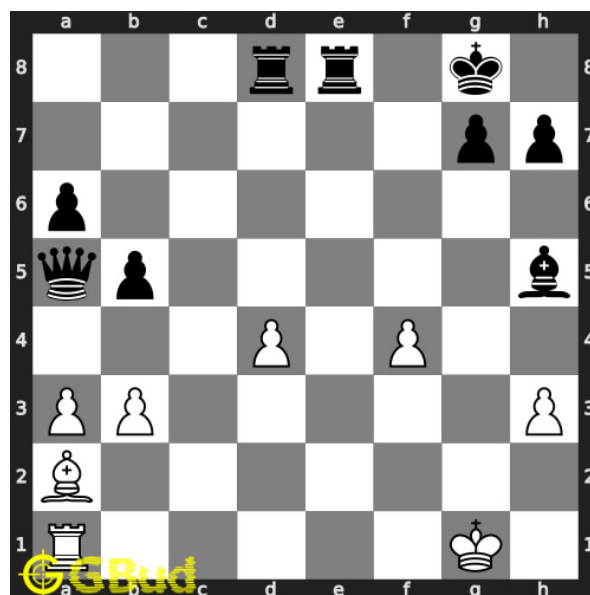


Figure 3: Initial board position of easy chess puzzle 0113

Move 1 Move by white

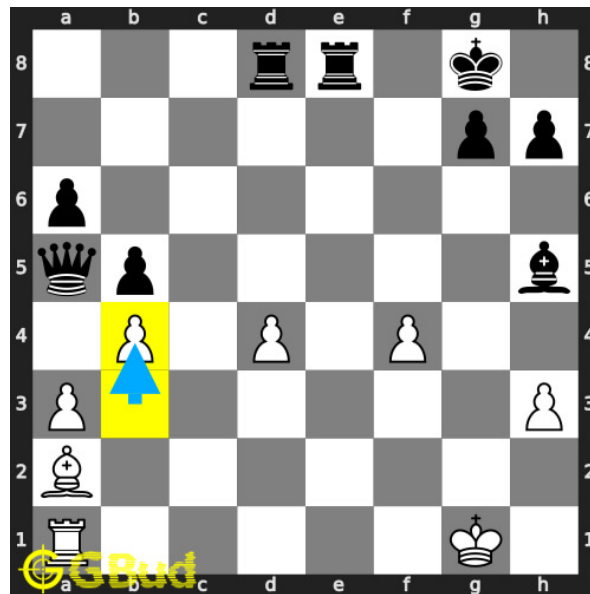


Figure 4: b4+

this is a discovered attack since the movement of the [pawn](#) results in [check](#) from the [bishop](#).

Move 2 Move by black

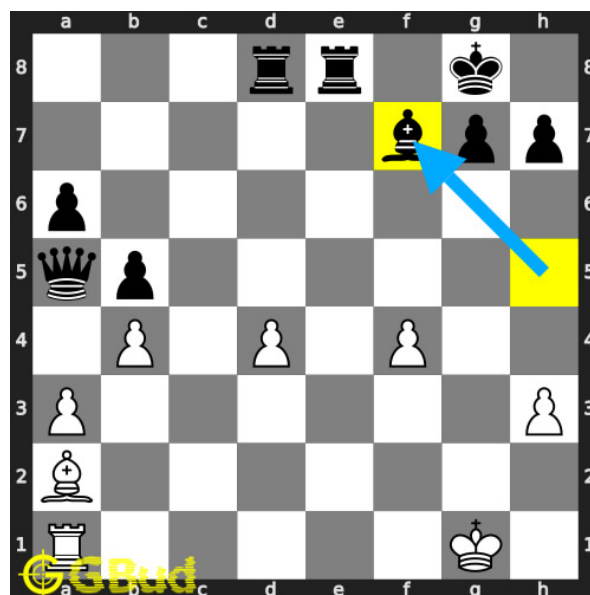


Figure 5: Bf7

this is a zugzwang [move](#) as the opponent is forced to respond to the [check](#) threat while their [queen](#) is under attack. their [bishop](#) blocks the [check](#).

Move 3 Move by white

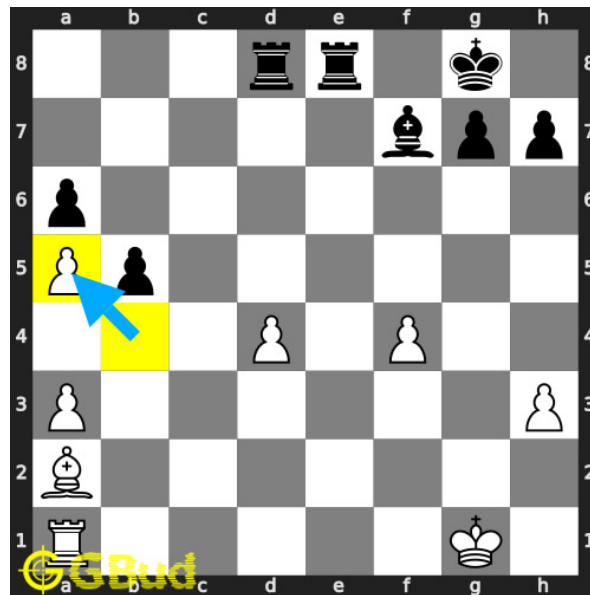


Figure 6: bxa5

your **pawn captures** opponents hanging **queen**. this is how you can **capture** opponent's **queen** after a discovered **check**.

Right moves for the solution to the easy chess puzzle 0113

Based on the objective of the puzzle, you have to make the right moves. Following are the right moves

1. b4+, bxa5

Explanation for the moves

1. b4+ - This is a discovered attack since the movement of the pawn results in check from the bishop.
2. Bf7 - This is a zugzwang move as the opponent is forced to respond to the check threat while their queen is under attack. Their bishop blocks the check.
3. bxa5 - Your pawn captures opponents hanging queen. This is how you can capture opponent's queen after a discovered check.
4. For right move - Good. you seized the opportunity to gain the queen.
5. For wrong move - You could have moved the pawn in b file to give a discovered attack. Try again

Categories of easy chess puzzle 0113

This easy chess puzzle falls in these categories.

1. [Easy chess puzzles](#)
2. [Gain puzzles in chess](#)
3. [Strategy puzzles in chess](#)
4. [Pawn puzzles in chess](#)

easy chess puzzle 0113 chart



Figure 7: easy chess puzzle 113 chart 1



Figure 8: easy chess puzzle 113 chart 2



Figure 9: easy chess puzzle 113 chart 3



Figure 10: easy chess puzzle 113 chart 4

How to view the solution to easy chess puzzle 0113

To view the [solution to this puzzle](https://gbud.in/gvr4g41), follow the steps given below

1. Go to the [puzzle page](https://gbud.in/gvr4g41)
2. Click the solution button (Key as shown [below](https://gbud.in/gvr4g41)) to view the solution



Figure 11: Click the solution button to view solutions @ <https://gbud.in/gvr4g41>

How to get help for moves in the easy chess puzzle 0113

To get help or the possible next moves in the puzzle, , follow the steps given below

1. Go to the [puzzle page](#)
2. Click the help button (exclamation mark as shown [below](#)) to get help or suggestion on next possible [move](#)



Figure 12: Click the help button to get help on next move @ <https://gbud.in/gvr4g41>



Figure 13: Solve more easy puzzles @ <https://gbud.in/chsezpz>



Figure 14: Solve other puzzles @ <https://gbud.in/chsgppz>

Play chess for free

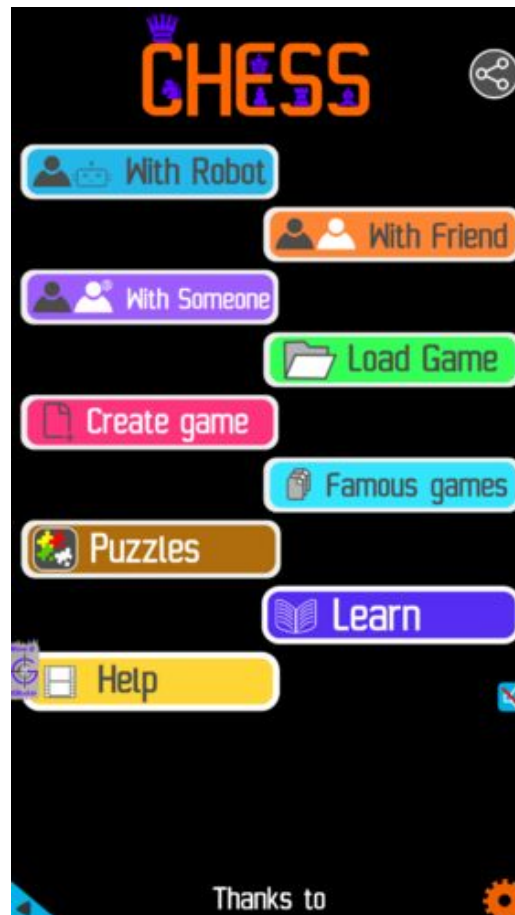


Figure 15: Play chess online for free. Solve puzzles and play with friends

Play chess for free at <https://gbud.in/chs>

We present you a platform to play chess online with friends for free. No need to install any app. You can play chess for free without registration or login.

Simple. You can do several chess related activities.

1. [solve chess puzzles](#)
2. [learn about chess](#)
3. [play chess with computer](#)
4. [play chess with friend](#)
5. [create your own chess games](#)

6. [fen viewer](#)
7. [fen editor](#)
8. [fen generator](#)
9. [pgn viewer](#)
10. [chess board editor](#)
11. [view famous chess games.](#)



Figure 16: Solve this puzzle online by scanning this QR code or go to the link below

<https://gbud.in/gvr4g41>

Read the latest article on Easy Chess puzzle # 0113 - Capture opponent's queen after a discovered check by scanning this QR code or click the link

Previous article : « [Easy Chess puzzle # 0112 - Mate in 2 moves](#)

Next article : [Easy chess puzzles](#) »

[Back to top](#)

[Contact Us](#)